

# MONTHLY MEMBERSHIP PROGRESS REPORT

LOCATION NEW HAMPSHIRE

District 44 H

Results as of: 6/30/2023

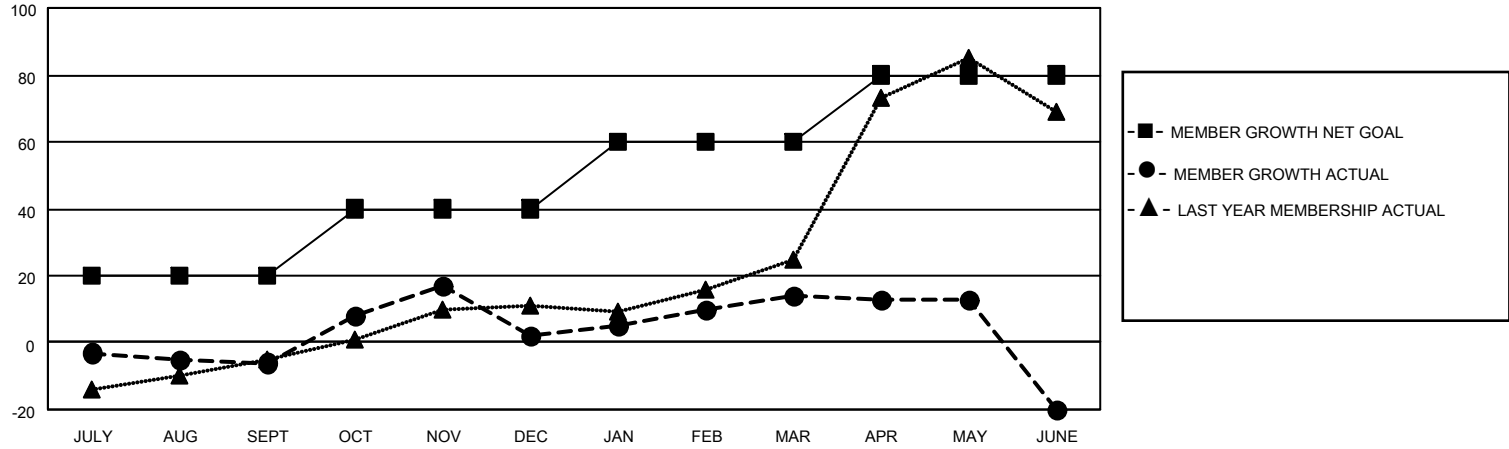
Clubs			
RESULTS FOR 2022-2023			
QUARTER	NEW CLUB GOAL	NEW CLUBS	DROPPED CLUBS
JULY/AUG/SEPT	0	0	0
OCT/NOV/DEC	0	0	0
JAN/FEB/MAR	0	0	0
APR/MAY/JUNE	0	0	0

Members			
RESULTS FOR 2022-2023			
QUARTER	MEMBER GROWTH NET GOAL	MEMBER GROWTH ACTUAL	DROPPED MEMBERS ACTUAL (including transfers)
JULY/AUG/SEPT	20	15	16
OCT/NOV/DEC	20	37	28
JAN/FEB/MAR	20	38	23
APR/MAY/JUNE	20	40	72

**GOALS AND ACTUAL NEW CLUBS CUMULATIVE**



**GOALS AND ACTUAL MEMBERS CUMULATIVE**



DROPPED CLUBS: 0	
<b>DROPPED MEMBERS</b>	
DECEASED	19
CLUB CANCELLED	0
OTHER	120
<b>TOTAL</b>	<b>139</b>

28 CLUBS OF 38 ADDED 1 OR MORE NEW MEMBERS

[CLICK HERE FOR CUMULATIVE MEMBERSHIP DATA](#)

<u>GENDER DISTRIBUTION</u>	
MALE	634 (50.92%)
FEMALE	611 (49.08%)
NON BINARY	0 (0.00%)
PREFER NOT TO ANSWER	0 (0.00%)
<b>TOTAL FAMILY UNIT MEMBERS</b>	
	<b>447</b>
<b>FAMILY MEMBERS PAYING HALF DUES</b>	
	<b>236</b>